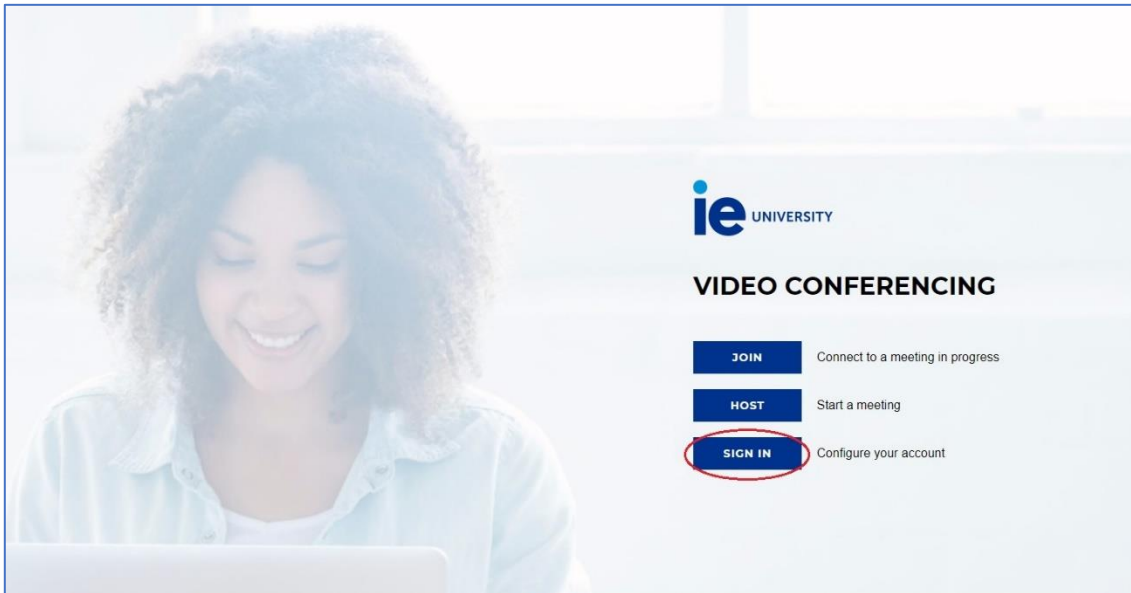


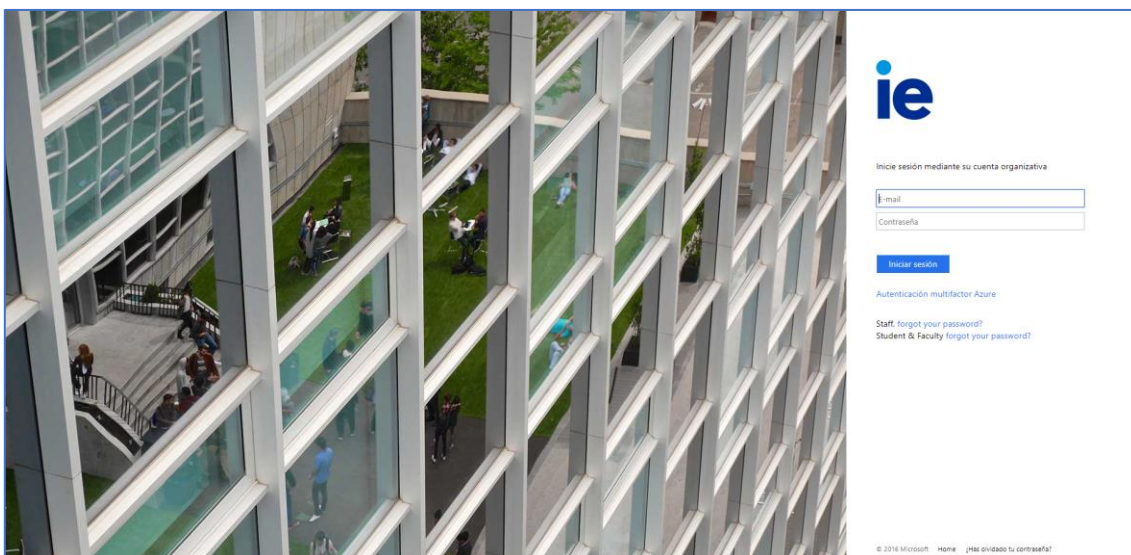
How to activate your Zoom account (Faculty)

Via browser:

Go to <https://ieuniversity.zoom.us> and click on SIGN IN



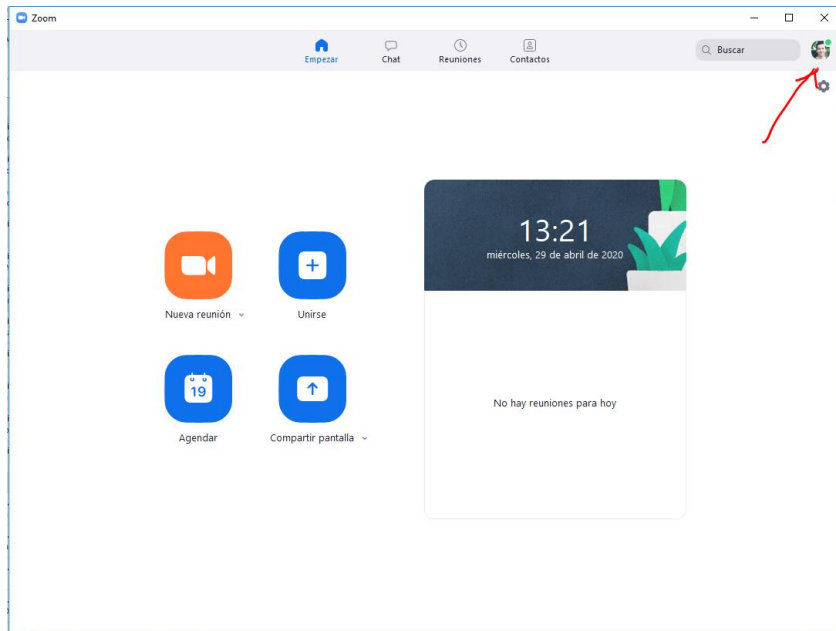
Then you have to introduce your IE email (@faculty.ie.edu) and password.



How to activate your Zoom account (Faculty)

Via app:

If you are logged in with other account, click on the profile icon on the top right corner and select “log off”. If not, go to the next step.



Then, click on “sign in with SSO”.



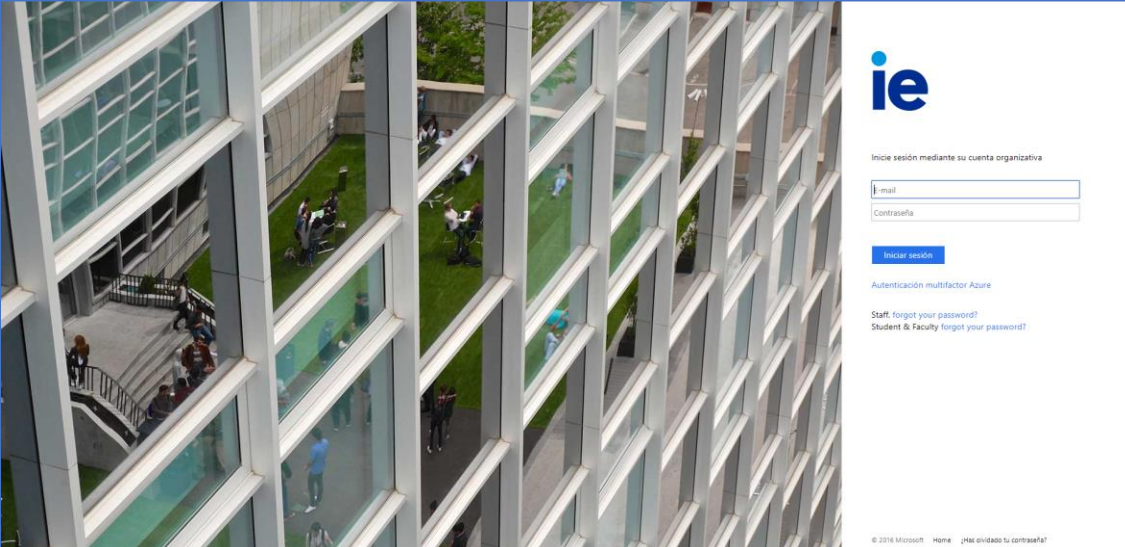
How to activate your Zoom account (Faculty)

It will ask you for a domain, you have to type **ieuniversity**.



The screenshot shows a Zoom web interface titled "Reuniones de ZOOM en la nube". The main heading is "Iniciar sesión con SSO". Below this, there is a form for entering a company domain. The text "Dominio de la compañía" is positioned above a text input field containing "ieuniversity". To the right of the input field is the ".zoom.us" label. Below the input field, there is a link that says "No conozco el dominio de la empresa" and a blue button labeled "Continuar". In the bottom left corner, there is a link that says "< Regresar".

Then you have to log in with your IE email (@faculty.ie.edu) and password.



The screenshot shows a login page for an organizational account. On the left side, there is a large image of a modern building with a glass facade and a courtyard. On the right side, there is a login form with the "ie" logo at the top. Below the logo, it says "Inicie sesión mediante su cuenta organizativa". There are two input fields: "Email" and "Contraseña". Below these fields is a blue button labeled "Iniciar sesión". Underneath the button, it says "Autenticación multifactor Azure". At the bottom of the form, there are two links: "Start, forgot your password?" and "Student & Faculty forgot your password?". At the very bottom of the page, there is a small copyright notice: "© 2016 Microsoft Home ¿Ha olvidado su contraseña?"